

## CorroLogic® CUI Inhibitor Injection powered by Nano VpCI®

### DESCRIPTION

CorroLogic® CUI Inhibitor Injection is a high-temperature 100% Vapor phase Corrosion Inhibitor (VpCI®) for protection against corrosion under insulation (CUI). When injected directly into insulating material, the corrosion inhibiting vapor migrates from the injection point along the pipe to form a hydrophobic protective layer on metal surfaces below.

CorroLogic® CUI Inhibitor Injection combats corrosion caused by moisture and other corrosive media that enter insulation after water barrier wraps or jackets are compromised or when condensation builds up, often unnoticed, beneath the insulation. Applying CorroLogic® CUI Inhibitor Injection provides long-lasting benefits such as decreased maintenance costs, reduced downtime for repair and replacement, and an overall increase in safety by preventing catastrophic failures related to corrosion.

### PACKAGING & STORAGE

CorroLogic® CUI Inhibitor Injection is available in 5 gallon (19 L) pails, 55 gallon (208 L) drums, and liquid totes.

To ensure best product performance, store in original packaging, indoors, and out of direct sunlight at 40-100 °F (4-38 °C).

Shelf life: 2 years

### VpCI® FORMULATED PRODUCTS FOR PROCESS INDUSTRIES



### FEATURES

- Able to migrate throughout insulation to protect hidden metal surfaces from corrosion
- Thermally stable up to 662 °F (350 °C)
- Non-flammable (flash point: 310 °F [154 °C], ASTM D93)
- Attracted to metal surfaces where it forms a protective layer
- Long-lasting
- Made with renewable feedstock
- Biodegradable (OECD 301)

### BENEFITS

- Saves labor and downtime by injection application method
- Inhibits CUI on pipes and other insulated metal surfaces
- Reduces frequency of maintenance and repair related to CUI
- Increases overall plant safety by reducing dangerous corrosion-related failures
- Protects in wet and dry cycles
- Protects in the presence of chloride-containing moisture

### APPLICATION

Product must be applied at temperatures above 59 °F (15 °C). Please contact Cortec® Technical Services prior to application.

CorroLogic® CUI Inhibitor Injection should be injected through existing insulation at a rate of 0.4 fluid ounces per cubic foot (0.42 L/m³) of insulation volume. Injection points should be spaced 10-20 feet (3-6 m) apart to allow proper dispersion and saturation of the product. For best results, injection should reach as close to the pipe surface as possible.

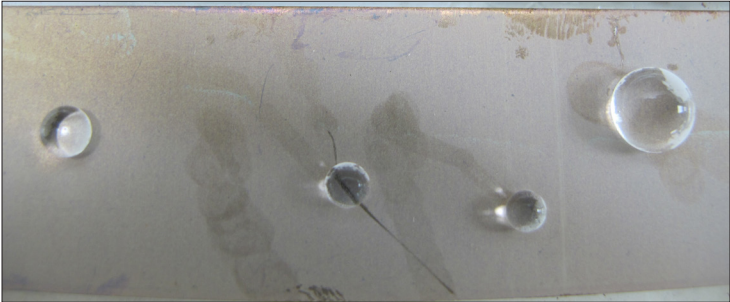
# CorroLogic® CUI Inhibitor Injection powered by Nano VpCI®

## METALS PROTECTED

- Ferrous metals

## TYPICAL PROPERTIES

Appearance	Clear to light yellow liquid
Density	6.6-6.9 lb/gal (0.79-0.83 g/cm <sup>3</sup> )
Flash Point	310 °F (154 °C)
Pour Point	55.4 °F (13 °C)
Freeze/Thaw Stability	Passes



*Hydrophobic protective layer formed by migrating VpCI® molecules.*



*Before (left image) and after (right image) overnight exposure to drops of 200 ppm chloride solution at 176 °F (80 °C). No corrosion appeared on panel treated with vapor from CorroLogic® CUI Inhibitor Injection (narrow panel at left), while chloride droplets caused corrosion on untreated carbon steel panel (wide panel at right).*

4119 White Bear Parkway, St. Paul, MN 55110 USA  
Phone (651) 429-1100, Fax (651) 429-1122  
Toll Free (800) 4-CORTEC  
productinfo@corotecvci.com  
<https://www.corotecvci.com>  
<https://www.corrologic.com>



### LIMITED WARRANTY

All statements, technical information and recommendations contained herein are based on tests Cortec® Corporation believes to be reliable, but the accuracy or completeness thereof is not guaranteed.

Cortec® Corporation warrants Cortec® products will be free from defects when shipped to customer. Cortec® Corporation's obligation under this warranty shall be limited to replacement of product that proves to be defective. To obtain replacement product under this warranty, the customer must notify Cortec® Corporation of the claimed defect within six months after shipment of product to customer. All freight charges for replacement products shall be paid by customer.

Cortec® Corporation shall have no liability for any injury, loss or damage arising out of the use of or the inability to use the products.

**BEFORE USING, USER SHALL DETERMINE THE SUITABILITY OF THE PRODUCT FOR ITS INTENDED USE, AND USER ASSUMES ALL RISK AND LIABILITY WHATSOEVER IN CONNECTION THEREWITH.** No representation or recommendation not contained herein shall have any force or effect unless in a written document signed by an officer of Cortec® Corporation.

**THE FOREGOING WARRANTY IS EXCLUSIVE AND IN LIEU OF ALL OTHER WARRANTIES, EXPRESS, IMPLIED OR STATUTORY, INCLUDING WITHOUT LIMITATION ANY IMPLIED WARRANTY OF MERCHANTABILITY OR OF FITNESS FOR A PARTICULAR PURPOSE. IN NO CASE SHALL CORTEC® CORPORATION BE LIABLE FOR INCIDENTAL OR CONSEQUENTIAL DAMAGES.**