



**CORTEC**  
CORPORATION

*Environmentally Safe VpCI®/MCI® Technologies*

## Corrosorber®

### DESCRIPTION

Corrosorber® absorbs hydrogen sulfide, volatile mercaptans, and other corrosive gases, removing them from the atmosphere and eliminating the cause of some damage to metals. The chemicals contained in Corrosorber® have been treated to change color from off-white to black as corrosive gases are trapped. Corrosorber® will not interfere with VpCI® protection.

Unlike other products on the market, Corrosorber® will not release the corrosive gases back into the atmosphere. The reaction is irreversible, eliminating any concern about post-contamination.

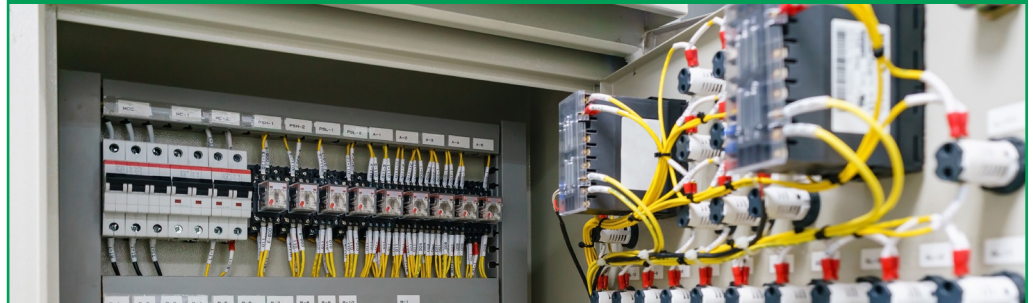
### PACKAGING & STORAGE

Corrosorbers are plastic self-stick devices covered with a breathable membrane. Diameter: 2.3" (5.8 cm). Height: 1.27" (3.2 cm). Individually wrapped and shipped 10 cups per carton.

To ensure best product performance, store in original packaging, indoors, and out of direct sunlight at 40-100 °F (4-38 °C).

Shelf life: 2 years

### VpCI® EMITTING SYSTEMS & ELECTRONIC PRODUCTS



### FEATURES

- Scavenges corrosive gases
- Safe to handle
- Changes color as it is used up
- Irreversible reaction, no post-contamination
- Economical to use
- Quick and easy to install
- Does not interfere with electrical, optical, or mechanical surface performance
- Protects during operation and shutdown
- Compact, space-saving, unobtrusive device

### TYPICAL APPLICATIONS

- Petrochemical plants
- Water treatment plants
- Plants handling sulfurous crude oil
- Natural gas handling operations
- Pulp and paper plants
- Livestock and agricultural facilities
- Operating, packaged, and stored electrical equipment
- Marine navigation and communication equipment
- Aerospace electrical controls
- Electric motors, switching equipment
- Fuse boxes, power boxes
- Medical equipment
- Electrical wireways, terminal boxes
- Scientific and measuring instruments
- Telecommunications equipment
- Remote electronics devices

# Corrosorber®

## APPLICATION

Install the Corrosorber® at the earliest possible time, before shipping or receiving if possible. Simply select a space where corrosion protection would be useful, and attach using self-adhesive backing. Replace cup as soon as the container appears gray.

In-use temperature: 32-140 °F (0-60 °C).

Typical Conditions:

- 10ft<sup>3</sup> (283.2 L) enclosure
- 1 ppm of hydrogen sulfide
- 1 air change on a daily basis



4119 White Bear Parkway, St. Paul, MN 55110 USA  
Phone (651) 429-1100, Fax (651) 429-1122  
Toll Free (800) 4-CORTEC  
info@cortecvci.com  
<https://www.cortecvci.com>  
<https://www.cortecpackaging.com>



### LIMITED WARRANTY

All statements, technical information and recommendations contained herein are based on tests Cortec® Corporation believes to be reliable, but the accuracy or completeness thereof is not guaranteed.

Cortec® Corporation warrants Cortec® products will be free from defects when shipped to customer. Cortec® Corporation's obligation under this warranty shall be limited to replacement of product that proves to be defective. To obtain replacement product under this warranty, the customer must notify Cortec® Corporation of the claimed defect within six months after shipment of product to customer. All freight charges for replacement products shall be paid by customer.

Cortec® Corporation shall have no liability for any injury, loss or damage arising out of the use of or the inability to use the products.

**BEFORE USING, USER SHALL DETERMINE THE SUITABILITY OF THE PRODUCT FOR ITS INTENDED USE, AND USER ASSUMES ALL RISK AND LIABILITY WHATSOEVER IN CONNECTION THEREWITH.** No representation or recommendation not contained herein shall have any force or effect unless in a written document signed by an officer of Cortec® Corporation.

**THE FOREGOING WARRANTY IS EXCLUSIVE AND IN LIEU OF ALL OTHER WARRANTIES, EXPRESS, IMPLIED OR STATUTORY, INCLUDING WITHOUT LIMITATION ANY IMPLIED WARRANTY OF MERCHANTABILITY OR OF FITNESS FOR A PARTICULAR PURPOSE. IN NO CASE SHALL CORTEC® CORPORATION BE LIABLE FOR INCIDENTAL OR CONSEQUENTIAL DAMAGES.**