

Editorial Contact:  
Cortec® Advertising Agency

Julie Holmquist  
(651) 429-1100 Ext. 1194

[jholmquist@cortecvci.com](mailto:jholmquist@cortecvci.com)



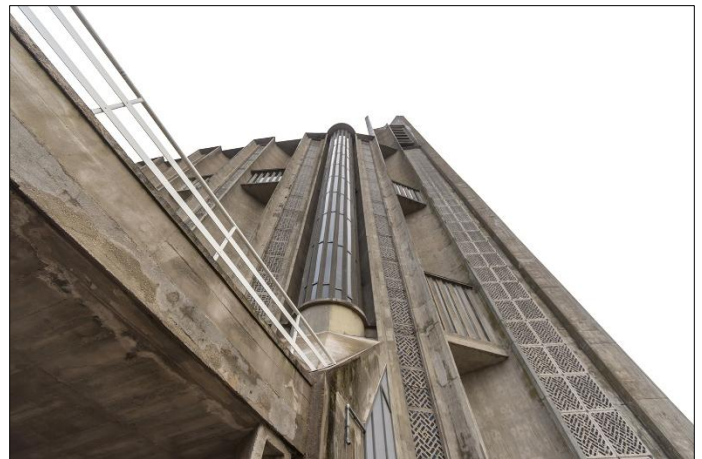
**Attention: Editor**  
**April 7, 2026**  
**PRESS RELEASE**



## **As Brutalist Structures Age, Cortec® Calls Contractors to Face the Harsh Realities of Corrosion**

*Cortec's MCI® technology offers practical solutions to common corrosion challenges in Brutalist architecture.*

More than three decades after developing [MCI®](#) (Migrating Corrosion Inhibitor™) technology, global corrosion solutions provider [Cortec® Corporation](#) is pointing engineers and contractors back to MCI® as an important key to preserving historic structures built in the Brutalist architectural style. Popular in the 1950s-70s, Brutalist structures face normal aging concerns along with the common disadvantages of highly porous concrete and shallow rebar cover—conditions that speed up corrosion in aging concrete structures. MCI® offers engineers and contractors the chance to slow corrosion without altering the appearance of these historical structures.



MCI® can be applied to existing concrete structures during repair and maintenance. These corrosion inhibitors migrate through concrete pore structures to form a protective molecular layer on reinforcing steel, helping delay the onset of



corrosion and slow its progression. Products like [MCI®-2018](#) and [MCI®-2019](#) offer dual water repellency + surface applied corrosion inhibitors (SACIs), allowing contractors to add a protective boost to routine water repellent application once a decade (or as needed). Application of these surface applied products on Brutalist structures is especially easy due to the style's typical lack of exterior ornamentation. "The raw exposed concrete look helps in easing the application as there is no need to remove any cladding or paint in the preparation stage," Ashraf Hasania, MCI® Director of Business

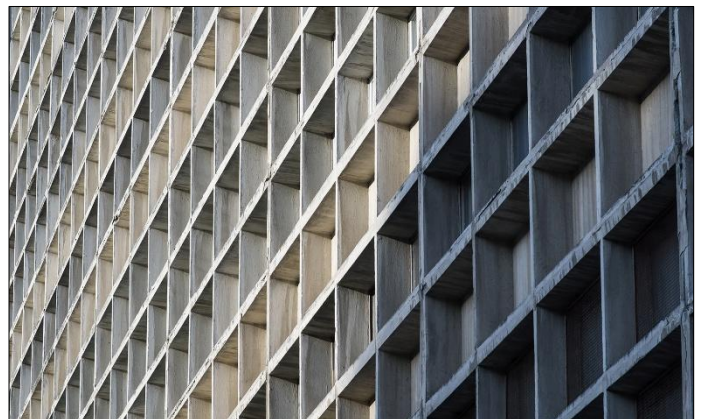
Development, explained.

Cortec® also offers repair stage solutions like [CorrVerter® MCI® Rust Primer](#), [MCI® Mini Grenades](#), and [MCI®-2020](#) for situations where corrosion is present, surface prep options are limited, and materials must match the original concrete as closely as possible.

Among the many cultural heritage projects where MCI® has been used, the following Brutalist structural repairs stand out:

- Memorial University, St. John's, Newfoundland: CorrVerter® MCI® was used to passivate corroded rebar above the education building entrance, while MCI®-2020 was used to inconspicuously protect the decorative entrance from further corrosion and extend the service life of the repair.
- New York Hall of Science: Repair work on the shallow cast-in-place concrete façade of this unique structure included application of MCI®-2020 and a water repellent. Monitoring subsequently confirmed effective corrosion protection.

The threat of corrosion is a brutal reality for all reinforced concrete—not less so for Brutalist structures. With MCI® as a time-tested technology that reduces corrosion rates without changing appearance, it is an excellent tool for contractors or engineers involved in preserving Brutalist structures. Visit [cortecmci.com](http://cortecmci.com) to learn more about MCI® and to discuss your current project with an MCI® rep.



*\*Be sure to test removal and surface compatibility before use.*



**Keywords:** concrete corrosion protection, rebar corrosion mitigation, corrosion inhibitors for existing concrete, corrosion inhibitors for existing structures, concrete repair for aging infrastructure, historic concrete repair solutions, reinforced concrete preservation, rusted rebar in concrete, Cortec, MCI

Need a High-Resolution Photo? Visit: [www.cortecadvertising.com](http://www.cortecadvertising.com).

Cortec® Corporation is the global leader in innovative, environmentally responsible VpCI® and MCI® corrosion control technologies for packaging, metalworking, construction, electronics, water treatment, oil & gas, and other industries. Our relentless dedication to sustainability, quality, service, and support is unmatched in the industry. Headquartered in St. Paul, Minnesota, Cortec® manufactures over 400 products distributed worldwide. ISO 9001:2015 and ISO 14001:2015 certified. Cortec® website: <http://www.cortecvci.com>. Phone: 1-800-426-7832. FAX: (651) 429-1122.