

Editorial Contact:
Cortec® Advertising Agency

Jeni Duddeck
(651) 429-1100 Ext. 1114

jduddeck@cortecvci.com

Company Contact:
Cortec® Corporation

Julie Holmquist
(651) 429-1100 Ext. 1194

jholmquist@cortecvci.com

Technical Contact:
Cortec® Corporation

Rick Shannon
(651) 429-1100 Ext. 1146

rshannon@cortecvci.com



**Attention: Editor
December 14, 2023
PRESS RELEASE**



Get Ready to Paint Your Industrial Floors, Railings, and Stairs!

Are you getting ready to paint a new industrial facility for the first time or touch up an aging plant? Cortec® Corp. shares several coatings ideas for protecting concrete and metal surfaces inside your buildings.

Protecting Concrete Floors

When painting concrete floors, it is important to have a coating that will stand up to both traffic and any chemicals that might be used in the facility. In

many cases, [MCI®-2026 Floor Coating](#) is an excellent choice as a 100% solids, 2-component novolac epoxy coating with a high degree of chemical and abrasion resistance. [The coating is rated](#) to hold up very well against a variety of acids, solvents, alkalis, salts, and even some miscellaneous food items such as peanut butter and fruit/vegetable juices. MCI®-2026 Floor Coating can be used in areas with strict VOC limits and meets all of the USDA/FDA guidelines for use in federally inspected facilities.



Protecting Structural Steel

Metal walkways, railings, and stairways inside industrial facilities often need some extra corrosion protection—especially in a high moisture processing environment. Cortec® suggests the following direct to metal (DTM) corrosion inhibiting coatings:

- **CorrVerter® Rust Converter Primer**

[CorrVerter®](#) is a low VOC water-based rust converting primer that can be used on previously rusted surfaces where sandblasting or grinding is not a good option. When properly applied, it passivates the surface rust and protects against further rusting. It dries black and can be coated with a water-based or solvent-based topcoat.



- **Water-Based 2K Epoxy Primer**

[VpCI®-395](#) is an excellent primer for many metal surfaces, serving as a strong base for topcoats. As a two-component (2K) system, it offers the inherent durability advantages of cross-linking alongside the worker advantages of a water-based, low VOC coating. It can also be used as its own topcoat indoors, away from UV light.

- **Solvent-Based One-Coat System**

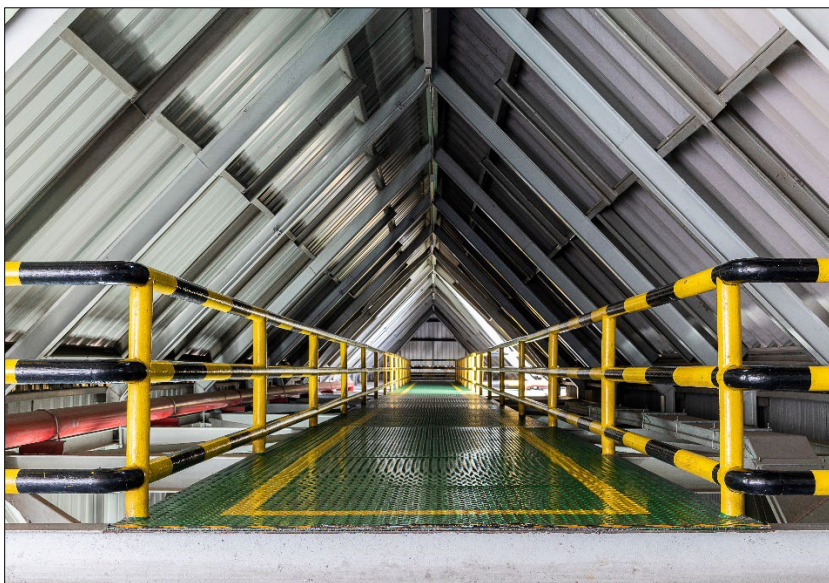
[VpCI®-396](#) is another primer option that may be preferred by workers who want to avoid the hassle of mixing a 2K system. It is a fast-drying solvent-based moisture cure urethane and can be matched to a variety of custom colors if desired for a topcoat.

- **Water-Based Acrylic Topcoat**

VpCI®-395 and VpCI®-396 can each be top-coated with [EcoShield® VpCI®-386](#), one of Cortec's top-performing water-based acrylic Micro-Corrosion Inhibiting Coatings™ that can be applied clear or matched to many custom colors.

Choosing a Color Scheme

While most factories are not rated for their beauty, choosing a paint color scheme for metal surfaces can still be important, creating a clean, uniform, or even cheerful environment. Sometimes safety colors are needed to identify a trip hazard or other danger area. In other cases, color-coding may be needed to identify different types of valves or piping. Often, Cortec® can adjust its protective coating tints accordingly with its color-matching services.



Get Help from Cortec® Coatings

Next time you need to apply a fresh coat of paint to concrete or metal inside your plant, make your selection based on the features and benefits your facility and workers need most.

[Contact Cortec® for further help with coatings selection and color matching.](#)

Keywords: paint for concrete floors, coating metal stairs, coating metal railings, corrosion inhibiting coatings, protective coatings for metal, concrete floor coating, Cortec color matching, chemical resistant coating, Cortec, VpCI

Need a High-Resolution Photo? Visit: www.cortecadvertising.com

Cortec® Corporation is the global leader in innovative, environmentally responsible VpCI® and MCI® corrosion control technologies for Packaging, Metalworking, Construction, Electronics, Water Treatment, Oil & Gas, and other industries. Our relentless dedication to sustainability, quality, service, and support is unmatched in the industry. Headquartered in St. Paul, Minnesota, Cortec® manufactures over 400 products distributed worldwide. ISO 9001:2015, ISO 14001:2015, & ISO/IEC 17025:2017 certified. Cortec® Website: <http://www.cortecvci.com> Phone: 1-800-426-7832 FAX: (651) 429-1122