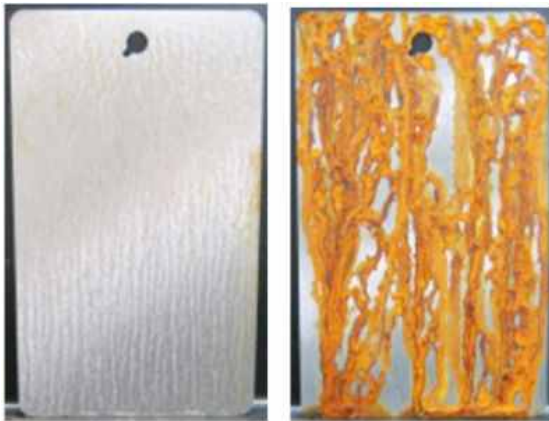




New USDA Certified Biobased and Biodegradable Temporary Rust Preventive for Outdoor Protection!

Today, U.S. federal agencies and their contractors have to meet special biobased requirements when purchasing products from 139 categories identified by the U.S. Department of Agriculture (USDA). One of these is corrosion preventatives, which must have 53% minimum biobased content to be a qualified product under the mandatory federal purchasing initiative of the USDA BioPreferred® Program.* Cortec® Corporation, a leading corrosion inhibitor manufacturer committed to using sustainable materials where possible, meets this need in the form of EcoLine® 3690, a USDA Certified Biobased Product that can be used to replace solvent- and mineral-oil based (Rps).



EcoLine® 3690 (left) vs Solvent-Based Competitor Coating (right) – 64 Hours post ASTM B117 Salt Fog Testing.

EcoLine® 3690 is a ready to use canola-oil-based temporary coating designed for corrosion protection in severe marine and high humidity conditions. It contains 72% USDA certified biobased content and leaves behind an oily protective film that does not dry. It is an excellent solution for contractors who manufacture parts or equipment for the federal government and need to prevent rust in interim periods of storage or shipment. It is also good for any manufacturer around the world who wants to go to the next level of sustainability while reducing VOCs and minimizing worker exposure to mineral-oil or solvent-based RPs. EcoLine® 3690 can be easily removed with an alkaline cleaner and can help users avoid hazardous waste disposal costs associated with traditional rust preventatives.



One particular tubing manufacturer who adopted EcoLine® 3690 for protection of newly manufactured tube ends was pleased with the corrosion protection results and safety benefits of EcoLine® 3690 for its employees. The temporary coating replaced a solvent-based rust preventative and impressed the manufacturer with its performance after a multi-month trial on tube bundles in outdoor storage.

For best results, EcoLine® 3690 should be applied to clean metal surfaces by spray, roll, brush, or dip at a recommended WFT (wet film thickness) of 1.0-3.0 mils (25-75 µm). It can also be applied over painted surfaces. EcoLine® 3690 has no VOCs and is temperature stable up to 180 °F (82 °C). It protects multiple metal types:

- **Carbon Steel**
- **Silver**
- **Cast Iron**
- **Stainless Steel**
- **Copper**
- **Magnesium**
- **Aluminum**





brand of heavy equipment.

Since 2001 MB Crusher manufactures attachments, valuable and innovative units that work by the hydraulic system of the machine that installs them. Excavators, mini-excavators, backhoes and skid loaders, telehandlers, they all can work with an MB bucket, simply plug in and begin recycling.

MB Crusher's range includes the screener bucket: designed for the **selection of natural material** like pebbles, slag heap, sand, and soil in pre and post-crushing phase with the aim to reduce crushing time by 60%. Throughout the years this line has proven to have a **wider range of application fields**: beach cleaning, recovery of ferrous waste, washing coal in power stations and groundskeeping. Distinguished by versatility and conceived by the need to **recycle with ease**. There are 7 models in this line, the buckets are made of interchangeable panels to allow on-site changes to satisfy any type of processing.

MB grapples have a 360° rotation and a tilted coupler for a greater range of movement. Used for **selecting and handling** of any type of material in total safety and full reliability.

All 4 models are so responsive and enable really **precise selection even for large or oddly shaped objects**, moreover, the claws blade can be accessorized to be even more responsive in any job sites even when handling masonry in **controlled demolitions in urban areas**.

The MB Crusher drum cutters line is built with a **Direct Drive Twin Motor System**. This direct transmission dual-motor system allows a differentiated distribution of force on the two drum-heads. This provides an enormous advantage since the power force is managed autonomously by the drum cutter according to the toughness and resistance of the material. Moreover, this new generation of standard drum cutters also adopts an integrated **Power Boost** to augment the power of the cutter head, which requires more force and obtains exceptional results.

The company started in 2001 with the crusher bucket.

A versatile jaw crusher. These units are responsible to have spread the concept of valorizing inert material is the job site wealth throughout the world.

A new way to operate was provided, practical and effective: reduce to recycle, invest in order to save money. **MB Crusher bucket** crushes debris and excavation materials in the same construction site that produced them. Brick, cement, reinforced concrete, granite, marble are some of the material that can be transformed by the MB Crusher bucket, also the **output size is fully adjustable** depending on what the site requires. Even material like glass, ceramic, light poles, sleepers, and reinforced concrete can be easily reduced with MB crusher bucket and start the reclaiming path.

An **iron separator** installed on the bucket crusher separates the iron portion. And during the operation, a **dust suppressor** reduces the dust from the crushing. Both kits are operated directly from the cab. And it is thanks to these kits that MB products can **work without problems in closed environments** (for example inside sheds and galleries) and in urban and historical centres.

And of course at the demo areas of ConExpo 2020, we're also demoing the newest line: the shafts screener. These 4 units are radically different from other systems available on the market. They are **designed to adapt** to a range of working environments and select different types of materials with **unprecedented simplicity and speed**, without needing a specialist or special training.

Since 2001, the company has evolved while remaining true to its purpose which is:

facilitating the work on-site and to make it competitive, self-contained and profitable. Continuing to accumulate and not managing inert material has When the right tools are chosen, the process is easily achieved, come to the MB Crusher America booths to speak become an **unsustainable cost for our planet**.

Recycling is much more than an opportunity, today it is more and more a **solution**. to a consultant and find out which units are the one for your machine and for your job site.